

STAR LAKE FARM

Springfield, NH - 1559 acre conservation easement



Star Lake Farm is a collection of over 1700 acres made up of 14 former farms of which 1559 acres has just been placed under conservation easement. Wholly within the Star Lake Farm conservation easement is the 65 acre Star Lake, habitat for nesting common loons, and the 10 acre McAlvin Pond. On the southwest boundary are 1200 feet of frontage on Baptist Pond, which are also protected with this conservation easement. Water from the property flows through either Baptist Pond or Otter Pond then on to Lake Sunapee, protecting the headwaters of the Lake Sunapee Watershed. Wetlands on the property provide important wildlife habitat, filter drinking water and provide flood control.

The farm itself includes over 100 acres of conserved fields, producing hay and pasture for 50 -100 head of cattle, some of which provide meat for local markets, like Spring Ledge Farm. Forestland is managed by a licensed professional forester, providing wood products to local mills. Sugar maples produce sap for maple syrup produced at the farm's sugar house.

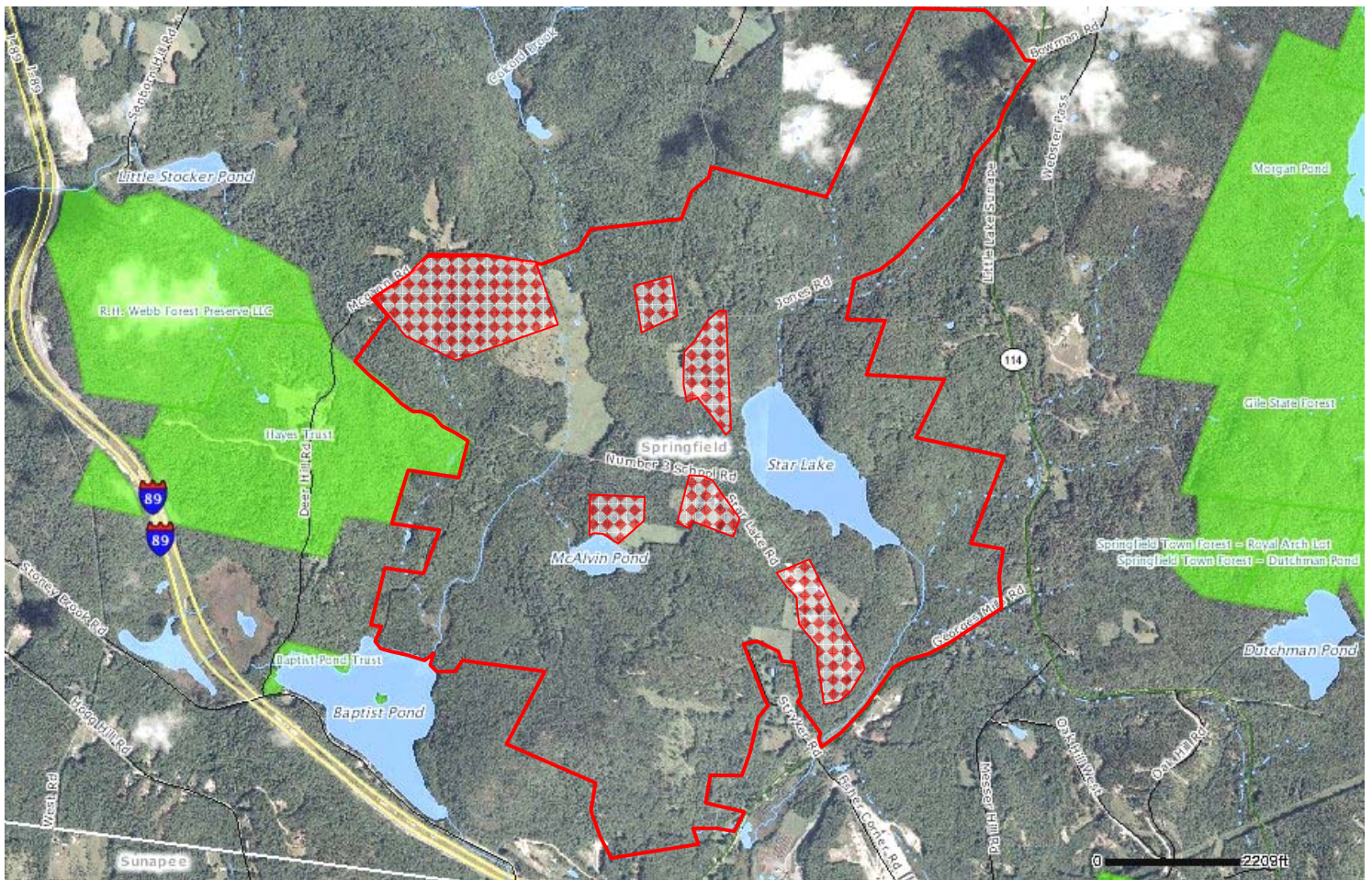
Four peaks over 1500 feet in elevation make this property visible from many areas in the region. By 2013, a new trail up Pitcher Hill will be open to the public, providing scenic views in all directions. The SKR Greenway Trail passes through the property on former class VI roads.

Wildlife are abundant on the property, ranging from black bear, moose, coyote and deer to loons, hawks, turkeys and song birds to turtles, snakes and salamanders. The NH Wildlife Action Plan identifies significant portions of the property as Highest Ranked Habitat in the State, or in the Biological Region. Other areas are identified as habitats that support those highly ranked areas.



Star Lake Farm owner, Dan Thorne donated permanent conservation protections on these 1559 acres of Star Lake Farm—"now & forever".

The 1559 protected acres of Star Lake Farm—red checkered areas are excluded from the easement.



Star Lake Farm Facts:

Star Lake Farm is located off Georges Mills Road in Springfield, and its lands border 6 public roads now protecting just over 13,000' of frontage. In addition to many acres of managed forest land, the property is actively farmed with over 100 acres of fields and pastureland known for its delicious locally raised beef.

This property is vital to the region's water resource protection as it includes the shoreline protection of all 8900' of Star Lake, 2500' on McAlvin Pond, 1200' on Baptist Pond and 3900' along Star Lake Brook. All of these still and moving waters are vital parts of the headwaters of the Lake Sunapee watershed providing filtration of drinking water, flood control and other important benefits.

There is public access for recreation on nearly 22,000' of private roads (not including motorized wheeled vehicles) and a trail will be built to the top of Pitcher Hill as a joint project of Ausbon Sargent, the SRK Greenway, Star Lake Farm and the Springfield Conservation Commission, affording the public striking views of lakes, ponds, mountains and ridgelines near and far.

If you would enjoy knowing more about the history of Star Lake Farm click here to read the article from Spring 2009 in Soo Nipi Magazine at www.soonipi.com.



Pasture raised beef on Star Lake Farm in Springfield, NH. Raised in a humane and sustainable manner with plenty of open pasture. No growth hormones or artificial supplements are used. No chemicals or water are added to the meat during packing. Sold at another Ausbon Sargent property: www.springledgefarm.com